



- One to two-day turnaround on quotes
- 10-day turnaround on deliveries
- Large in-stock inventory of components
- 5-year warranty on all lighting

Retail Display Lighting Solutions
for Original Equipment Manufacturers

LIGHTINGFOR

IMPACT

Why Lighting?

You'll get **results** everyone can see...

The simple integration of our display lighting *into your design projects* **expands your profitability** and delivers measurable results for your clients. It's easy, affordable, and has evolved into a retail best-practice.

Our lighting installations perform at more than 70,000 locations across North America — and are **proven** to **increase retail sales**.

- Improve shopper engagement with your display designs
- Enhance the overall appearance with captivating illumination
- Influence shopper perception of quality, freshness, and value for your clients
- Increase your sales and profitability

LIGHTINGFOR**IMPACT**



BEFORE



AFTER



Why Lighting for Impact?

A product portfolio that performs...

Our energy-efficient solutions feature a **5-year warranty**, and offer patented easy mounting options for metal, wire, wood, glass, plastic, and more!

Lighting transforms standard displays into remarkable experiences for shoppers.

See the following pages for photos of our OEM project collaborations.



”

“Lighting should be a top priority in store design to enhance the retail environment and highlight products. Because lighting can single-handedly influence the mood of the shopping environment, retailers must understand how they can use lighting to shape their customer experience.”

— Ron Lutz, EVP & CCO, Miller Zell

Lighting for Impact offers solutions for a wide variety of retail applications...



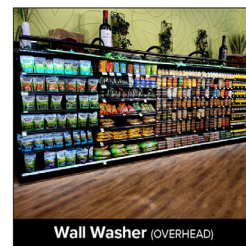
C-Channel (DOWN LIGHTING)



J/Q-Channel (UP/DOWN LIGHTING)



W-Channel (UP/DOWN LIGHTING)



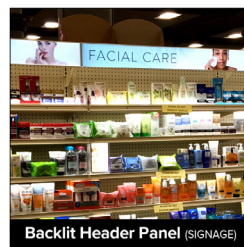
Wall Washer (OVERHEAD)



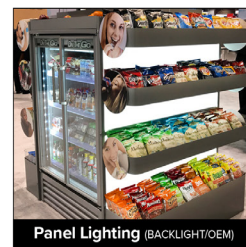
Valance Light (OVERHEAD)



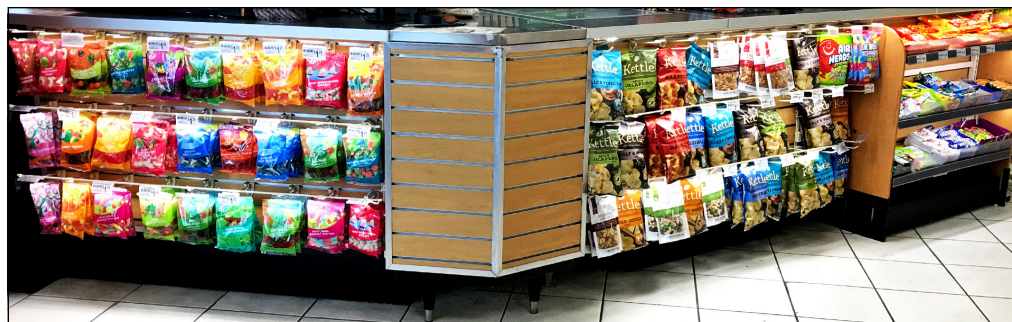
Uplit Panel (UP LIGHTING/SURFACE)



Backlit Header Panel (SIGNAGE)



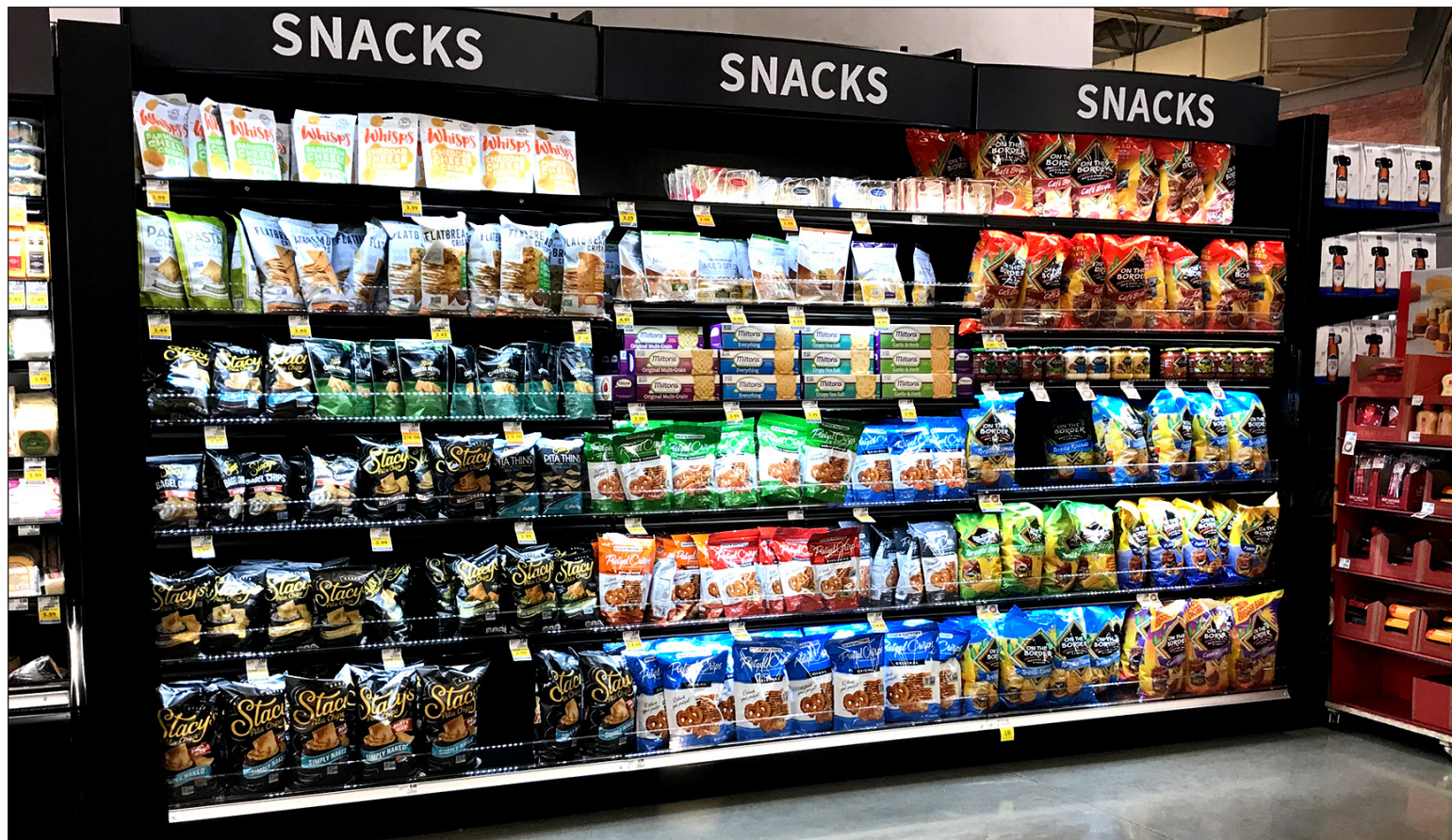
Panel Lighting (BACKLIGHT/OEM)





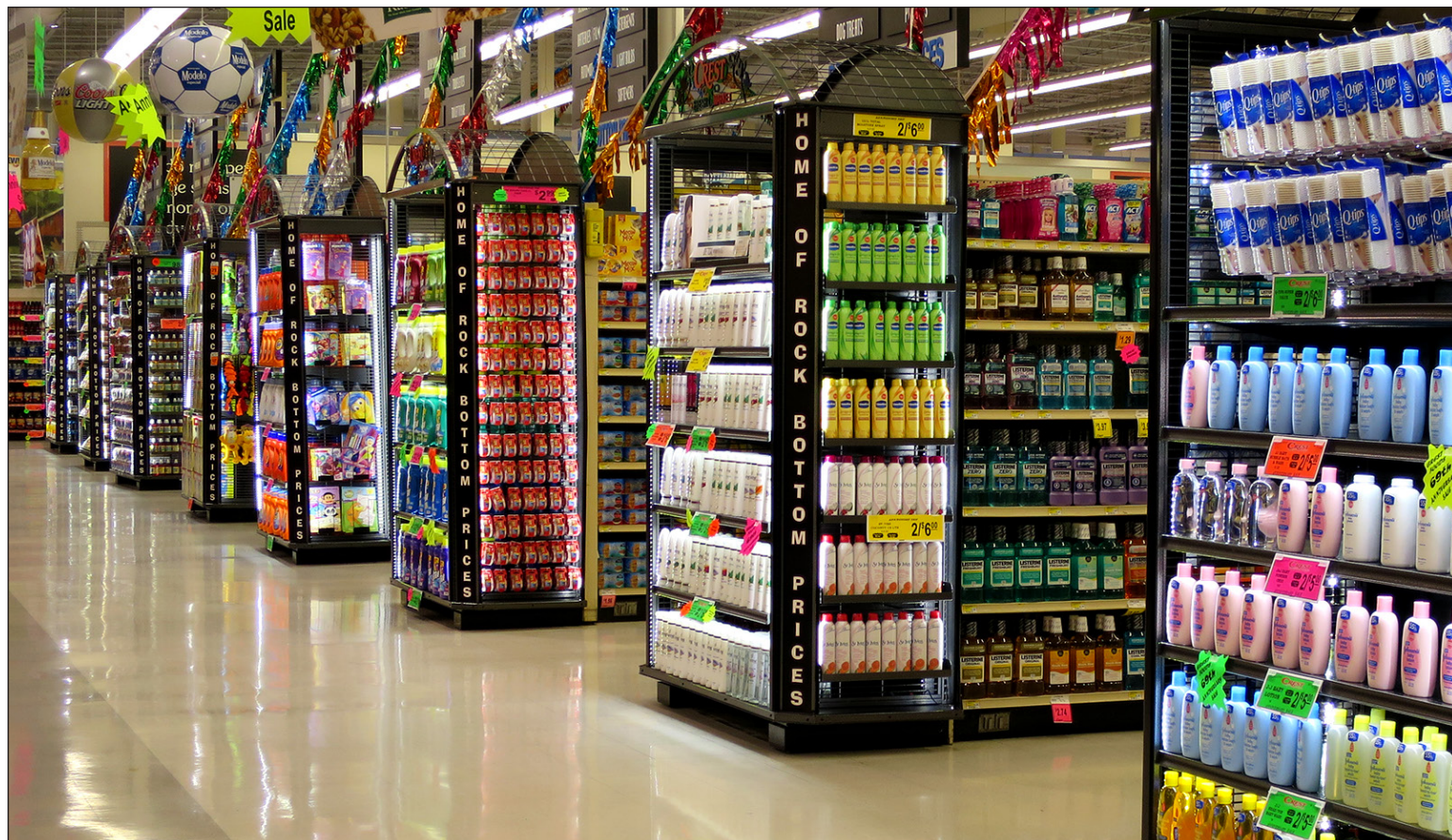


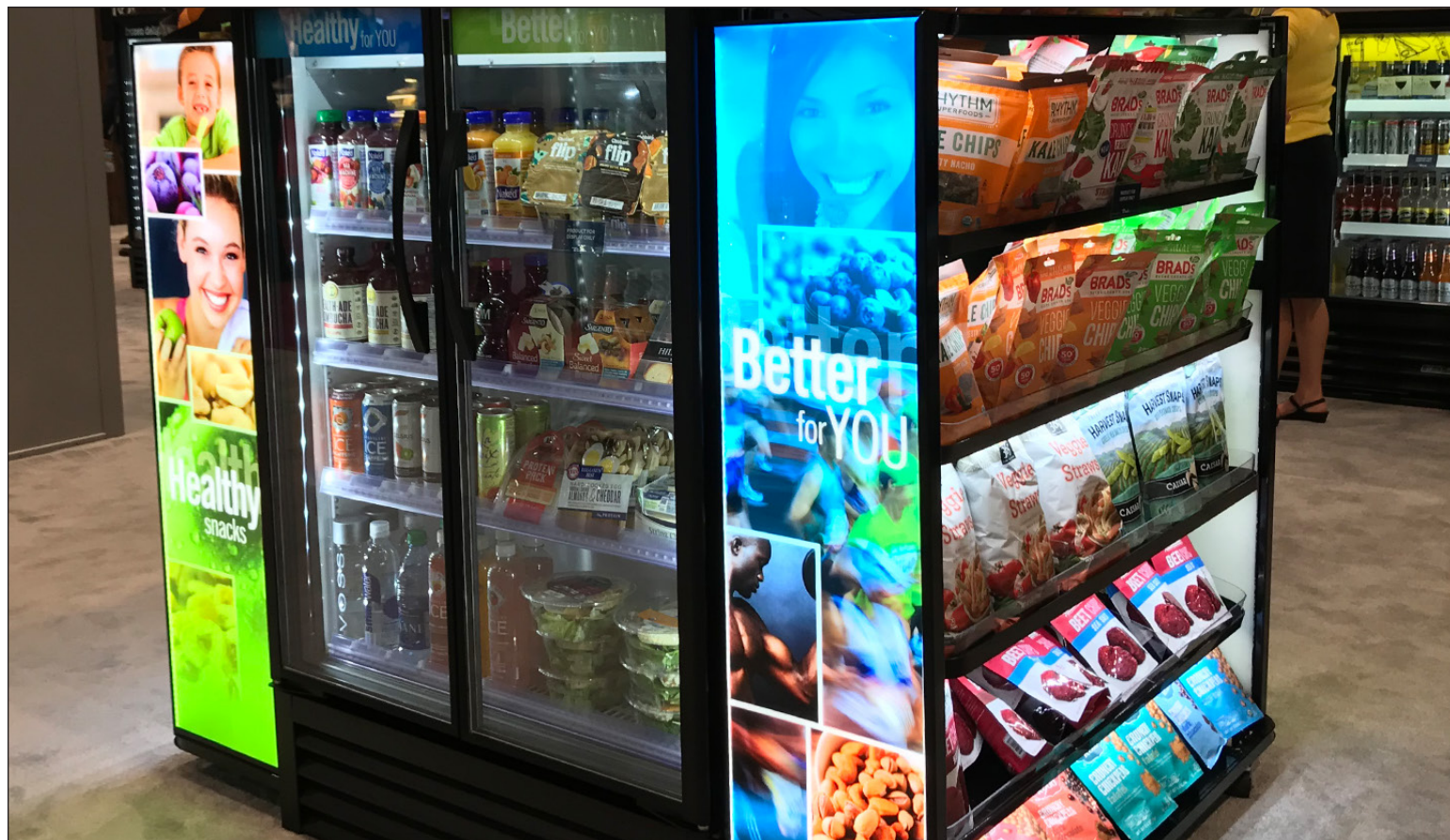




















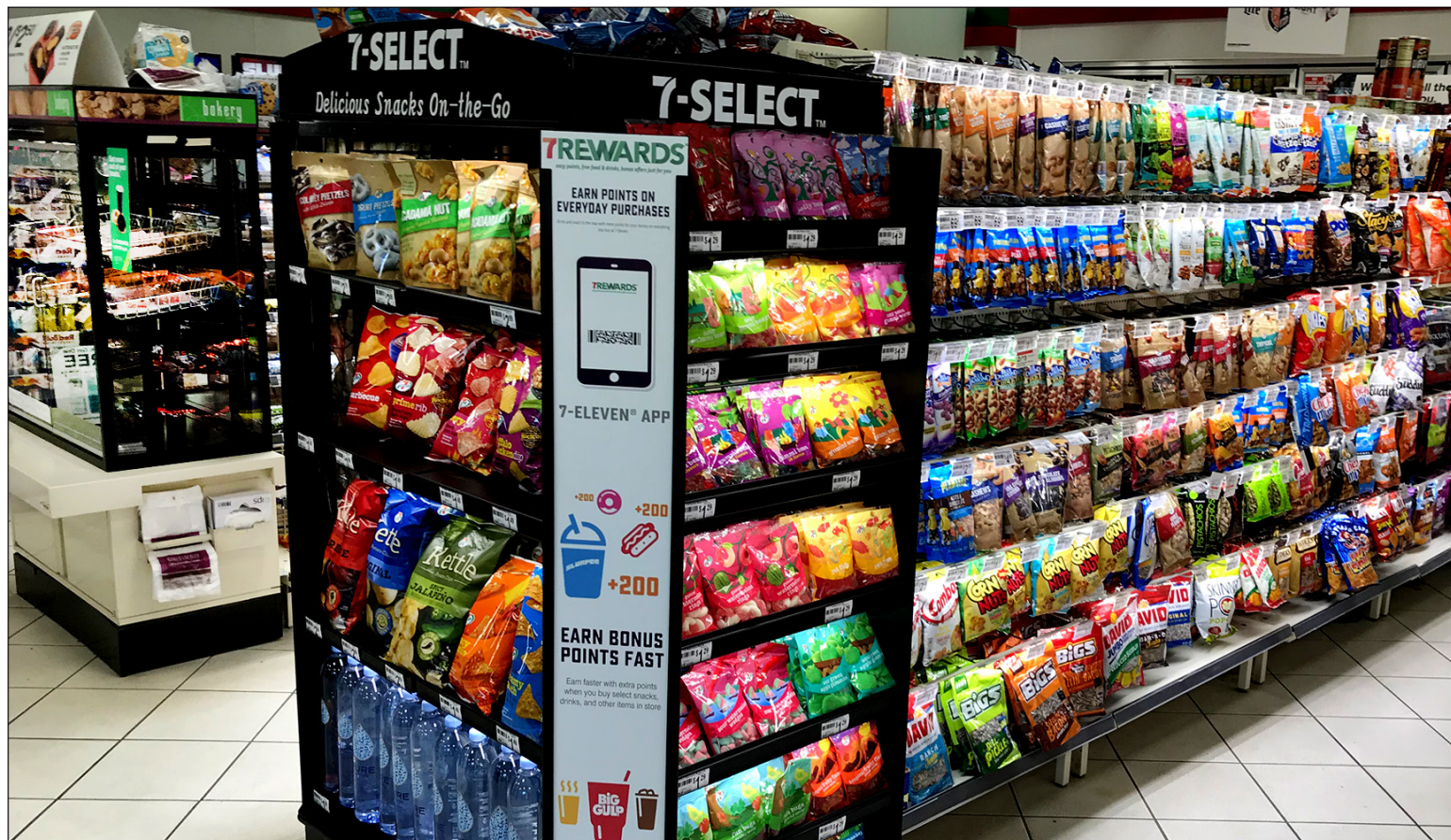








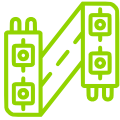






The Lighting for Impact Advantages

We're experts in the design and implementation of retail shelf and display illumination. We're passionate about innovation and offer top-quality products that elevate the shoppers' experience — and are proven to increase sales. More than 70,000 locations across North America rely on our lighting solutions. Our dedicated customer service teams are ready — and stand “at your service.”



Custom Design Consultations

Tell us your vision. We'll provide comprehensive designs, various options, and a few additional ideas for your consideration.



Customer-Centric Culture

Exceeding customer expectations is our passion. Our company's way of working is “Customer-First.” We don't just say it — *we do it!*



Value Engineered Systems

Our system is component-based, providing quality, flexibility, and value. It's “future-proof” to grow as your needs evolve — and includes a 5-year warranty.



In-Stock Inventory — No Back Orders

Large in-house inventory that's ready to ship. No waiting! In 2023, our on-time and complete performance measurement was an industry-leading 99.85%!



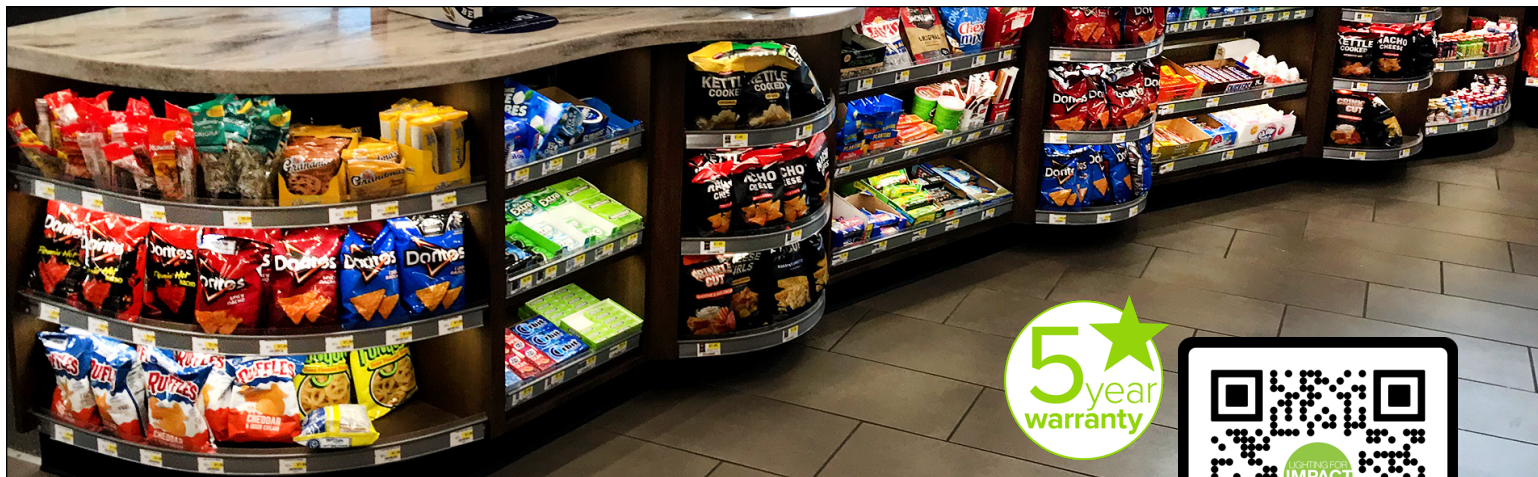
Fast Response and Delivery

Call us and we'll answer! One to two-day turnaround on most quotes, ten-day lead time on orders. Expedited shipments available if you're in a pinch.



Expert Installation

Our national network of reliable installation professionals can manage your installation process from start to finish. We'll provide a quote — nothing to lose!



Affordable. Simple. Dramatic. Effective.

There's never a good reason to delay success... Now's the perfect time to integrate our easy-install LED lighting into your display creations.

You'll see your *sales and profitability* in a **whole new light!**

Contact us to request a quote today!

Scan to download our
24-page catalog.

Lighting for Impact
3201 S. 6th Street
Lincoln, NE 68502

844.218.4112
www.lightingforimpact.com



LIGHTING FOR **IMPACT**

