



# Loss Prevention/Security Cases

## Display Lighting Look Book

LIGHTINGFOR

**IMPACT**





BEFORE



AFTER

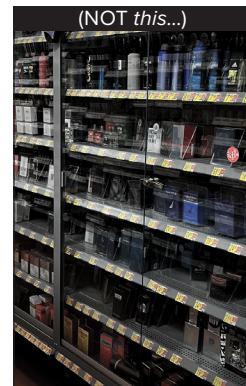
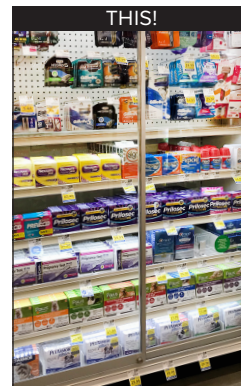
## The difference is *easy to see...*

Protecting your store with loss prevention measures need not compromise your merchandising strategy and profitability.

Lighting for Impact solutions lift sales out of the shadows and perform at more than 70,000 locations across North America.

***Proven to increase your sales***, you'll see your sales and profitability in a whole new light!

- Augment loss prevention measures
- Improve shopper engagement and dwell time
- Enhance the overall appearance of the in-store environment
- Influence shopper perception of quality, freshness, and value
- Increase your sales and profitability



# MOBILE to GO ZONE







“Lighting should be a top priority in store design to enhance the retail environment and highlight products. Because lighting can single-handedly influence the mood of the shopping environment, retailers must understand how they can use lighting to shape their customer experience.”

— Ron Lutz, EVP & CCO, Miller Zell



















“Light your display like it’s  
important! Remember, light  
makes the merchandise pop.”

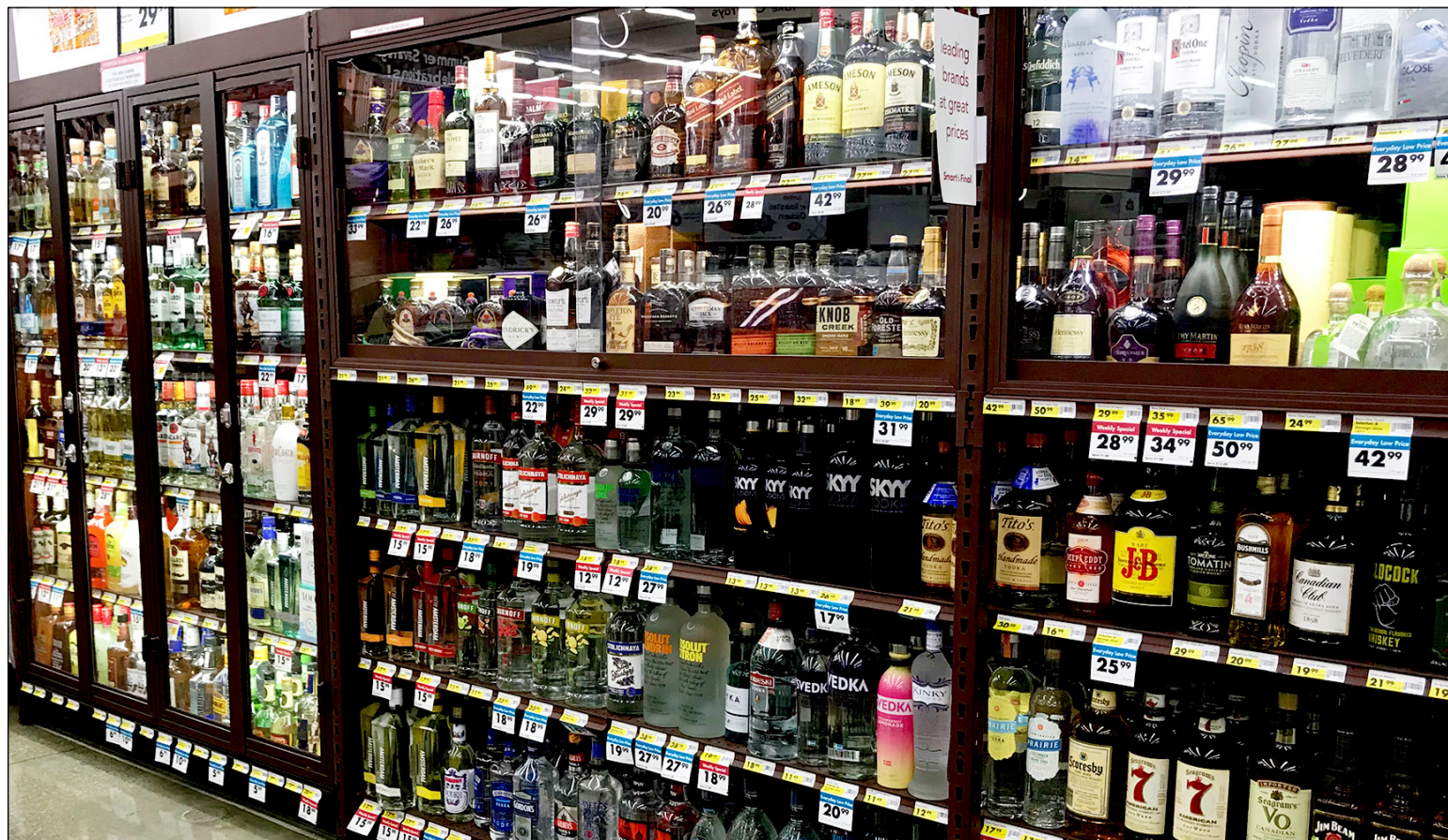
— Bob Phibbs, The Retail Doctor











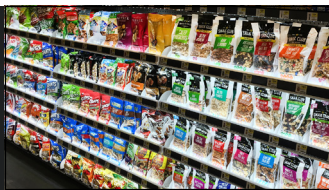
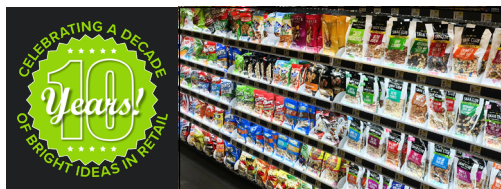








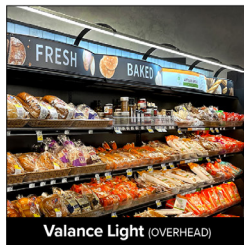




## Why Lighting for Impact?

Our solutions portfolio offers an ideal performance integration for:

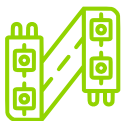
- Loss prevention security cases
- Center store aisles and end caps
- Checkout and undercounter displays
- Pegged displays and pusher systems
- Coolers and beer caves





# The Lighting for Impact Advantages

We're experts in the design and implementation of retail shelf and display illumination. We're passionate about innovation and offer top-quality products that elevate the shoppers' experience — **and are proven to increase sales**. More than 70,000 locations across North America rely on our lighting solutions. Our dedicated customer service teams are ready — and stand “at your service.”



## Custom Design Consultations

Tell us your vision. We'll provide comprehensive designs, various options, and a few additional ideas for your consideration.



## Customer-Centric Culture

Exceeding customer expectations is our passion. Our company's way of working is “Customer-First.” We don't just say it — *we do it!*



## Value Engineered Systems

Our system is component-based, providing quality, flexibility, and value. It's “future-proof” to grow as your needs evolve — and includes a 5-year warranty.



## In-Stock Inventory — No Back Orders

Large in-house inventory that's ready to ship. No waiting! In 2023, our on-time and complete performance measurement was an industry-leading 99.85%!



## Fast Response and Delivery

Call us and we'll answer! One to two-day turnaround on most quotes, ten-day lead time on orders. Expedited shipments available if you're in a pinch.



## Expert Installation

Our national network of reliable installation professionals can manage your installation process from start to finish. We'll provide a quote — nothing to lose!





**Affordable. Simple. Dramatic. Effective.**

There's never a good reason to delay success... Now's the perfect time to integrate our easy-install LED lighting into your store's displays.

You'll see your *sales and profitability* in a **whole new light!**

Contact us to request a quote today!



Scan to download  
our 24-page catalog.

Lighting for Impact  
3201 S. 6th Street  
Lincoln, NE 68502

**844.218.4112**  
[www.lightingforimpact.com](http://www.lightingforimpact.com)



LIGHTING FOR **IMPACT**

